

**Message Implementation Guideline**

**UN/EDIFACT Message**

**COPARN**

**(Container Announcement)**

**Export Release / Import (Empty) Return**

**Version 1.0**

**D 03A**

---

## Contents

1. Introduction .....	3
2. General.....	3
Formal Definition .....	3
Intended Audience.....	3
Document Scope .....	3
How this Document is Organised.....	4
Glossary.....	4
3. Business Requirements .....	4
4. Data Requirements .....	5
Export Release Number/Booking Number .....	6
Free Text Segment .....	7
Multiple Return Depot Indicator.....	7
Hazardous Indicator .....	7
Cancellation and Replacement .....	7
Unnecessary Data .....	7
Split Export Releases.....	7
Mixed Container Size Types .....	8
Quality Codes .....	8
Data Structure Details.....	8
6. Status and Usage Indicators.....	10
Status Indicators .....	10
Usage Indicators.....	10
7. Sample Messages.....	11
Export Release Scenario 1.....	11
Export Release Scenario 2.....	12
Export Release Scenario 3.....	12
Export Release Scenario 4.....	13
Container Return Advice Scenario 1 .....	14
8. Document Maintenance .....	15
9. COPARN Container Announcement Message.....	16

---

## 1. Introduction

This Message Implementation Guideline (MIG) has been developed by Tradegate Australia Limited in conjunction with Shipping Australia Limited and the container park industry.

The MIG is based on UN/EDIFACT D.03A directory and the Ship planning Message Development Group's (SMDG's) recommendations for the use of COPARN.

The attached EDI Message Implement Guideline (MIG) is an extract from the UN/EDIFACT Container Announcement Message Version Release 03A (D03A) It is designed for use by shipping lines to send export release notices and container return advices to an empty container park.

The MIG is based on UN/EDIFACT D.03A directory and the Ship planning Message Development Group's (SMDG's) recommendations for the use of COPARN.

## 2. General

### *Formal Definition*

'The message contains an order to release, to make available, to accept or call down containers or to announce the impending arrival of containers. This message is part of a total set of container-related messages. These messages serve to facilitate the intermodal handling of containers by streamlining the information exchange. The business scenario for the container message is clarified in a separate document, called "Guide to scenario of EDIFACT container messages"'.

The COPARN message is intended to perform a wide variety of instructions or request functions associated with the movement of equipment. These functions and requests are future dated such as authorising the release of an empty container for export purposes.

### *Intended Audience*

This document is intended for:

- Shipping line IT and administrative personnel
- Container Park IT and administrative personnel
- Transport operators IT and administrative personnel
- Software companies
- Bureaux operating within the international trade and transport community

### *Document Scope*

The scope of this document is to detail the Business Requirements, data requirements and data structure. In the Scope:

- Business Requirements
- Data requirements
- Data structure

- Sample messages and scenarios

## ***How this Document is Organised***

This document contains several sections as outlined below:

- Section 3 – Business Requirements
- Section 4 – Data Requirements
- Section 5 – Data Structure
- Section 6 – Status and Usage Indicators
- Section 7 - Sample Messages
- Section 8 – Document Maintenance

## ***Glossary***

<b>Term</b>	<b>Description</b>
SMDG	Ship planning Message Development Group. A not for profit organisation based in Europe comprised of shipping lines, terminal operators and other interested parties that develop international implementations of UN/EDIFACT standards.
CRA	Container Return Advice. A message from a shipping line or bureau to an empty container park indicating what containers are expected to be returned for a vessel/voyage.
COPARN	A UN/EDIFACT Message for Container Announcements. It contains an order to release, to make available to accept or call down containers or to announce impending arrival of containers.

## **3. Business Requirements**

Shipping lines and container parks have agreed to implement an export release, and an empty container return advice (CRA) message. The export release message will provide information to the container park about what empty containers are to be released to transport providers for exporters.

The CRA will provide information to a container park about what containers the container park can expect to be returned within a few days or weeks.

The COPARN MIG will allow both export release and CRA to be utilised within the single message, thereby reducing costs for container parks and shipping lines.

The MIG has been developed to ensure consistency with the SMDG's (Ship planning Message Development Group) Guidelines for the COPARN Message. Additionally, it has been drafted to take into account existing implementations of the COPARN Message for export release purposes. As a result there is some flexibility in how data can be represented within the message.

---

It is anticipated that the message will be transmitted via the Internet, using SMTP mail (internet email). EDI data is normally attached to an SMTP message as MIME attachments.

## 4. Data Requirements

The following data items **must** be included in all electronic **export release** messages from shipping lines to container parks:

- Message function, e.g. original, cancellation, replacement
- Issue date/time
- Booking reference number/release number
- Date of release of the container(s)
- Lloyd's number
- Voyage number
- ETD of vessel
- Message recipient
- ISO container size/type
- Quantity of container by size/type
- Container full/empty indicator
- Place of pickup of the container
- Use of shipping company seals indicator

The following optional data **may** be included in **export release** messages:

- Leasing company reference number (if required)
- Port of loading
- Leasing company name (if required)
- Contact name
- Contact name telephone number
- Container status indicator i.e. export
- Goods description
- Container weight rating
- Container status codes
- Container quality codes

The following items **must** be included if applicable to the cargo:

- Temperature detail if pre-tripping is required for refrigerated cargo
- Temperature settings (in Celsius)
- Range settings (in Celsius)
- Vent settings

The following data items **must** be included in all electronic **container return advice (CRA)** messages from shipping lines to container parks:

- Message function, e.g. original, cancellation, replacement
- Issue date/time
- Lloyd's number
- Voyage number
- ETA of vessel
- Port of discharge
- Message recipient
- ISO container size/type
- Container number
- Quantity of container by size/type
- Place of return of the container

The following data **may** be included in all electronic container return advice messages from shipping lines to container parks:

- Hazardous goods indicator
- Multiple return depot indicator

The following data **may** be included in all electronic container return advice messages from shipping lines to container parks:

- Hazardous goods indicator

## 5. Data structure

This MIG is a subset of the UN/EDIFACT COPARN Message version D.03A. The message segments/grouping follows the structure of the full COPARN message which can be obtained from <http://www.unece.org/trade/untdid/welcome.htm>. Segments and Groupings from the full message not mentioned in the attached MIG can be included but it is recommended that they not be processed.

A separate message (UNH-UNT) must be constructed for each COPARN although many COPARN can be bundled together and sent simultaneously in a single interchange (UNB-UNZ). Only one interchange should be sent per email attachment.

The MIG attached provides for some flexibility as to the order of sequence of relevant segments. This is to take into account existing implementations of the export release message. As a result some information may occur in different places in the message. These are discussed below together with some other processing issues and business rules.

### ***Export Release Number/Booking Number***

This can occur in accordance with the MIG in the RFF segment in Group 1; or in the RFF segment in Group 13, immediately following the EQD.

---

### ***Free Text Segment***

Users attention is drawn to the Free Text segments in Group 13. That is, the Free Text data is associated to the container details in the preceding EQD (Equipment Details) segment.

Users are asked to note that the FTX segment has been codified as much as possible to make automatic processing as simple as possible.

### ***Multiple Return Depot Indicator***

When using the message as a CRA, some shipping lines provide for a container to be returned to multiple depots. Where this occurs, multiple return depot indicators can be used.

### ***Hazardous Indicator***

There is provision for a Hazardous Indicator in the FTX segment. This is to be used in the CRA to indicate that a container held dangerous goods.

### ***Cancellation and Replacement***

At the industry meeting it was agreed that any changes or cancellation of a complete booking/release would be done via a “replacement” indicator. However, this would necessitate sending complete information with zero values for the entire booking.

It is has been agreed that where a booking/release is cancelled in full that the cancellation indicator in the BGM is used together with the relevant RFF segment holding the booking/release reference number. The only other information required to be sent is the EQD segment.

### ***Unnecessary Data***

The MIG does provide a place for port of discharge, port of loading, or place of ultimate destination. It is considered that this information is not necessary for container parks and would involve unnecessary coding. Should it be considered essential for shipping lines from a programming perspective, it can be included as an optional requirement. If this is the case it would be recommended that the container park ignore the data when processing the message.

### ***Split Export Releases***

Users will note that the TDT Segment occurs in two different places – in Group 2 and in Group 18 towards the end of the message. The Group 2 TDT is to be used when it refers to the whole message. When there is a split export release, that is, where there may be a number of containers being released over an extended period of time for different vessel/voyage numbers, the TDT in Group 18 is to be used.

The Group 18 TDT has its accompanying DTM and LOC segments.

The MIG takes note of the issue raised by container parks about split export releases. How container parks cope with such a scenario is a commercial matter between a shipping line and a container park.

## **Mixed Container Size Types**

The MIG provides for mixed container size types to be used within a single message. Some container parks may not be able to cope with this situation. Container parks may organise alternatives with shipping lines or may elect to use the services of a bureau service.

## **Quality Codes**

The MIG enables quality codes to be used in the FTX segment. The quality codes itemised in the MIG are the codes approved by Shipping Australia's container Technical Committee.

## **Data Structure Details**

The data segments below appear in the actual order of transmission and provide an overview of the MIG.

Group	Segment	Repeats	Content
	UNH	1	Message header
	BGM	1	Document type - Empty return - Export Release  Message function - Original - Replacement - Cancellation
	DTM	1	Message preparation date/time
	RFF	9	Reference numbers - Leasing Co Ref Number - Reference No to previous message - Booking/Release number
2, 18	TDT	1	Maritime transport carriage - Voyage Number - Vessel Operator's Name - Carrier Name - Vessel name
2, 13, 18	DTM	1	Vessel time - ETA - ETD
3, 19	LOC	2	Transport place/location - Port of loading - Port of discharge - Final destination
4	NAD	4	Name and address - Container operator/lessor - Message recipient - Message sender - Lessor
5	CTA	1	Contact Name



5	COM	1	Contact Telephone Number
<b>Containerised cargo</b> (up to 999)			
13	EQD	1	Container (equipment) details - Type (e.g. Reefer, other) - ISO Container Size/type - Supplier code e.g. shipper, carrier etc. - Status code e.g. Export, Import - Container Full/empty indicator
13	RFF	(up to 4 per EQD)	Container Reference - Leasing Company Number - Booking reference number - Line item reference number - Release number
13	EQN	1 per EQD	Quantity of Container size/type
13	DTM	(Up to 2 per EQD)	Release date/time - Effective date - Expiry date - Pick up/date - Not to be released before date - Empty return estimated date/time
13	LOC	9	Container park location - Place of loading - Return location
<b>Temperature Details</b>			
14	TMP	1 per EQD	Temperature setting
14	RNG	1 per EQD	Temperature range
<b>Seal Number</b>			
13	SEL	1 per EQD	Seal Issuer Indicator
<b>Free Text Comments</b>			
13	FTX	9	Free Text - Goods description - Container weight rating - Order instruction - Vents open/closed - Quality demands/requirements - Container status codes - Hazardous goods indicator for empty return - Duplicator depot indicator for empty return

## 6. Status and Usage Indicators

### Status Indicators

Status Indicators (“M” and “C”) form part of the UN/EDIFACT standard and indicate a minimum requirement to fulfil the needs of the message structure. The Status indicators are:

Value	Description
M	Mandatory  The entity marked as such must appear in all messages, and apply to these messages as well a to any associated message implementation guidelines.
C	Conditional  The entity is used by agreement between trading partners

### Usage Indicators

Usage indicators are implementation-related indicators that further detail the use of “Conditional” Status indicators. Usage indicators are applied at all levels of the MIG and are shown adjacent to data items such as segment groups, segments, composite data elements, and simple data elements. They indicate the agreed usage of the data items or entities. The Usage indicators are:

Value	Description
M	Mandatory  Indicates the item is mandatory in the UN/EDIFACT message
R	Required  Indicates the item must be transmitted in this Implementation
D	Dependent  Indicates that the use of the item is depending upon a well-defined condition or set of conditions. These conditions must be clearly specified in the MIG.
O	Optional  Indicates that this item is at the need or discretion of both trading partners.
X	Not used

Indicates that this item is not to be used in this Implementation
---

Where an item within a segment group, segment or composite data element is marked with Usage Indicators “M” or “R”, but the segment group, segment or composite data element has been marked “O” or “D” (or “X”), the item is only to be transmitted when the segment group, segment or composite of which it is a part, is used.

## 7. Sample Messages

Following are a few example of messages related to various Scenarios.

### *Export Release Scenario 1*

- New empty release instruction
- Booking No: ABCD1234
- Shipping Line: Hapag Lloyd (HLC)
- Vessel: Glasgow Express/9232589
- Voyage: 908N
- Container Park: MSC
- Type and No of containers: 5 X 20 FT General Purpose
- Shipping line used seal: Yes
- Not to be released before: 20 April 2009

```
UNH+1+COPARN:D:03A:UN'  
  BGM+108+123+9'  
    DTM+137:200903171230:203'  
    RFF+BN:ABCD1234'  
    TDT+20+908N+1+++HLC:172::Hapag Lloyd+++9232589:146:11:Glasgow Express'  
      LOC+9+AUSYD'  
    NAD+CF+HLC'  
    NAD+MS+HLC'  
    NAD+MR+MSC'  
    EQD+CN++20G0+2+2+4'  
      EQN+5'  
      DTM+234:20090430:102'  
      SEL++CA'  
UNT+14+1'
```

## ***Export Release Scenario 2***

- Replace release instruction
- Booking No: ABCD1234
- Shipping Line: Hapag Lloyd (HLC)
- Vessel: Glasgow Express/9232589
- Voyage: 909N
- Container Park: MSC
- Type and No of containers: 6 X 20 FT General Purpose
- Shipping line used seal: Yes
- Not to be released before: 30 April 2009

```
UNH+2+COPARN:D:03A:UN'  
  BGM+108+123+5'  
    DTM+137:200903171230:203'  
    RFF+BN:ABCD1234'  
    TDT+20+908N+1+++HLC:172::Hapag Lloyd+++9232589:146:11:Glasgow Express'  
      LOC+9+AUSYD'  
    NAD+CF+HLC'  
    NAD+MS+HLC'  
    NAD+MR+MSC'  
    EQD+CN++20G0+2+2+4'  
      EQN+6'  
      DTM+234:20090430:102'  
      SEL++CA'  
UNT+14+2'
```

## ***Export Release Scenario 3***

- Cancellation of empty release instruction
- Booking No: ABCD1234
- Shipping Line: Hapag Lloyd (HLC)
- Container Park: MSC

```
UNH+3+COPARN:D:03A:UN'  
  BGM+108+123+1'  
    DTM+137:200903181020:203'  
    RFF+BN:ABCD1234'  
    NAD+CF+HLC'  
    NAD+MS+HLC'  
    NAD+MR+MSC'  
    EQD+CN++20G0+2+2+4'  
UNT+9+3'
```

## Export Release Scenario 4

- New empty release instruction
- Booking No: ABCD1235
- Shipping Line: Hapag Lloyd (HLC)
- Container Park: MSC
- Type and No of containers: 5 X 20 FT General Purpose; 5 X 40 FT Reefer
- Shipping line used seal: Yes
- Release dates:
  - 2 X 20 FT GPs not before 20 April;
    - Vessel: CIMBRIA/9241190
    - Voyage No: 9110
  - 3 X 20 FT GP not before 30 April;
    - Vessel: STX MUMBAI/9348912
    - Voyage No: 116N
  - 3 X 40 FT Reefer not before 25 April;
    - Vessel: Maersk PHUKET/9168219
    - Voyage No: 117N
  - 2 X 40 FT Reefer not before 15 May.
    - Vessel: CAP DOUKATO/9302437
    - Voyage No: 610N

```
UNH+4+COPARN:D:03A:UN'  
BGM+108+124+5'  
DTM+137:200903171230:203'  
RFF+BN:ABCD1235'  
NAD+CF+HLC'  
NAD+MS+HLC'  
NAD+MR+MSC'  
EQD+CN++20G0+2+2+4'  
EQN+2'  
DTM+234:20090420:102'  
TDT+20+908N+1++HLC:172::Hapag Lloyd+++9232589:146:11:Glasgow Express'  
LOC+9+AUSYD'  
EQD+CN++20G0+2+2+4'  
EQN+3'  
DTM+234:20090430:102'  
TDT+20+908N+1++HLC:172::Hapag Lloyd+++9232589:146:11:Glasgow Express'  
LOC+9+AUSYD'  
EQD+CN++45R1+2+2+4'  
EQN+3'  
DTM+234:20090425:102'  
TDT+20+908N+1++HLC:172::Hapag Lloyd+++9232589:146:11:Glasgow Express'  
LOC+9+AUSYD'  
EQD+CN++45R1+2+2+4'  
EQN+2'  
DTM+234:20090515:102'  
TDT+20+908N+1++HLC:172::Hapag Lloyd+++9232589:146:11:Glasgow Express'  
LOC+9+AUSYD'  
UNT+28+4'
```

## Container Return Advice Scenario 1

- New impending arrival advise
- Shipping Line: Hapag Lloyd (HLC)
- Vessel: Glasgow Express/9232589
- Voyage: 908N
- Container Park: MSC
- Type and No of containers: 5 X 20 FT General Purpose; 5 X 40 Ft GP
- 3 containers with DG indicator
- 5 with multiple return depots.

```
UNH+5+COPARN:D:03A:UN'  
BGM+104+126+9'  
DTM+137:200917031230:203'  
TDT+20+908N+1++HLC:172::Hapag Lloyd+++9232589:146:11:Glasgow Express'  
LOC+9+AUSYD'  
NAD+CF+HLC'  
NAD+MS+HLC'  
NAD+MR+MSC'  
EQD+CN+HLCS2354484251+20G0+2+2+4'  
FTX+HAZ'  
EQD+CN+HLCS2354484252+20G0+2+2+4'  
FTX+MRD'  
EQD+CN+HLCS2354484253+20G0+2+2+4'  
FTX+HAZ'  
EQD+CN+HLCS2354484254+20G0+2+2+4'  
FTX+MRD'  
EQD+CN+HLCS2354484255+20G0+2+2+4'  
EQD+CN+HLCS2354484256+40G0+2+2+4'  
FTX+MRD'  
EQD+CN+HLCS2354484257+40G0+2+2+4'  
FTX+HAZ'  
EQD+CN+HLCS2354484258+40G0+2+2+4'  
FTX+MRD'  
EQD+CN+HLCS2354484259+40G0+2+2+4'  
FTX+MRD'  
EQD+CN+HLCS2354484260+40G0+2+2+4'  
UNT+27+5'
```

## 8. Document Maintenance

The data content of this MIG has been prepared and approved by Tradegate in consultation with Shipping Australia. No alteration may be made to the content of this document with reference to and prior approval of Tradegate and Shipping Australia.

Any remarks, questions, amendments or requested alterations to this document are to be addressed to:

Tradegate  
Level 6, 131 York Street  
Sydney NSW 2000

Tel: 02 9283 1144  
E-mail: [tradegate@tradegate.org.au](mailto:tradegate@tradegate.org.au)  
WWW: [www.tradegate.org.au](http://www.tradegate.org.au)

OR

Shipping Australia Limited  
Level 6, 131 York Street  
SYDNEY NSW 2000

Tel: 02 9266 9900  
Email: [amcdermid@shippingaustralia.com.au](mailto:amcdermid@shippingaustralia.com.au)  
WWW: [www.shippingaustralia.com.au](http://www.shippingaustralia.com.au)

## 9. COPARN Container Announcement Message

### Introduction:

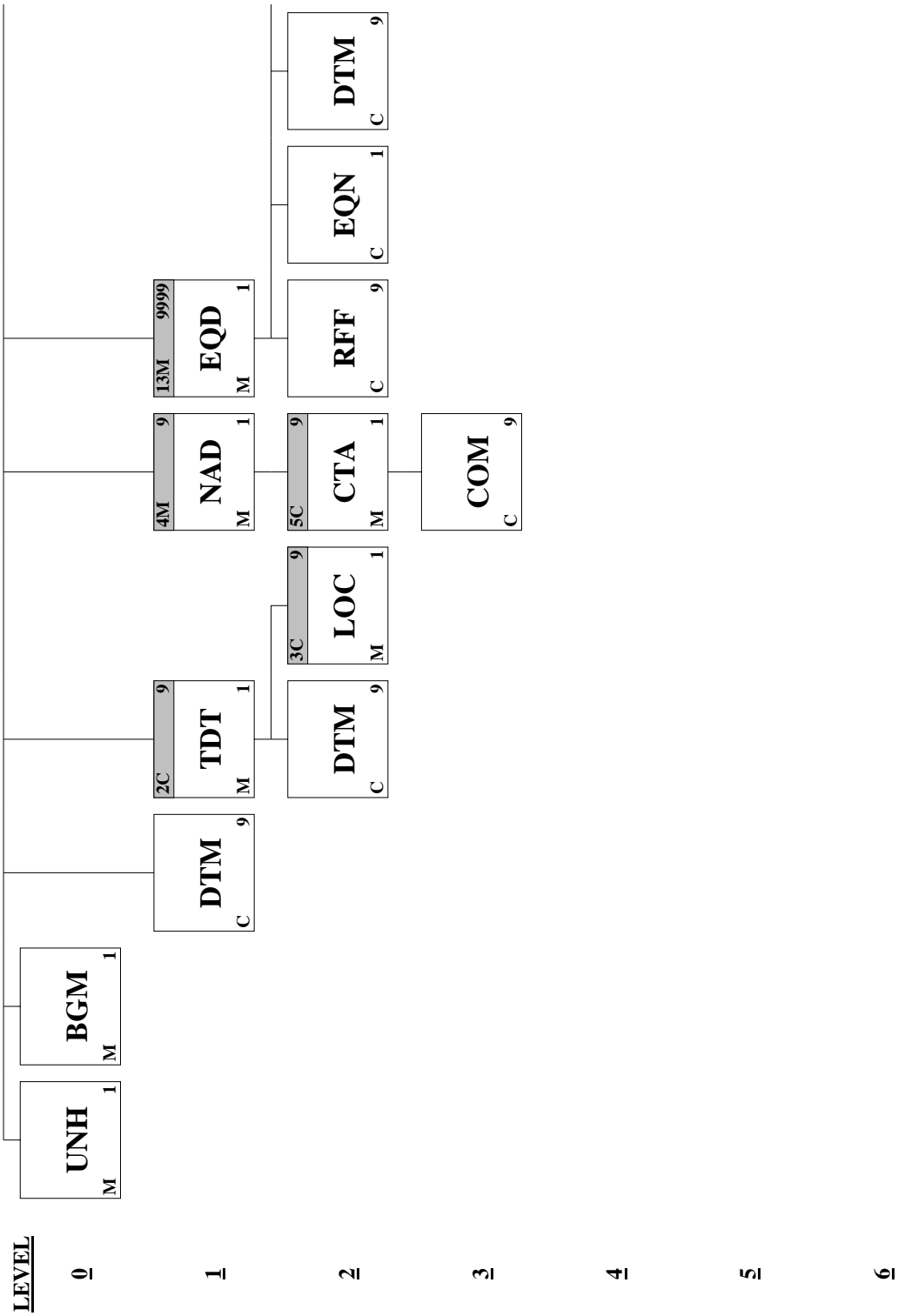
The message contains an order to release, to make available, to accept or to call down containers or to announce the impending arrival of containers.

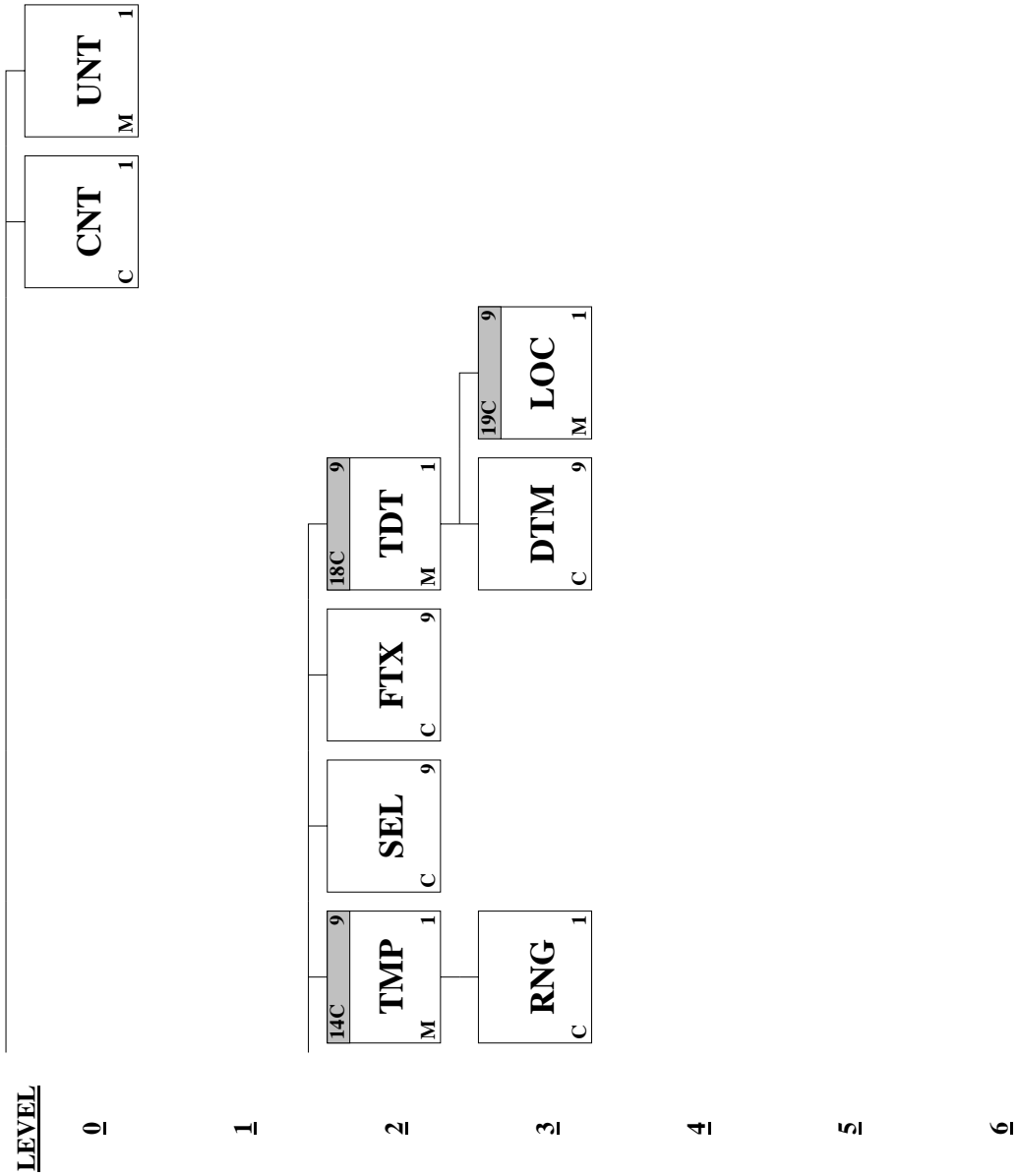
This message is part of a total set of container-related messages. These messages serve to facilitate the intermodal handling of containers by streamlining the information exchange. The business scenario for the container messages is clarified in a separate document, called: 'Guide to the scenario of EDIFACT container messages'.

The order may pertain to cargo related containers (full container load and less than container load), the arrangement of empty containers prior to loading and after stripping, as well as the arrangements for leasing the empty containers (on-hire and off-hire of containers).

Page No.	Pos. No.	Seg. ID	Name	Base Attributes		Group Repeat
				Des.	Max.Use	
19	0010	UNH	Message Header	M	1	
20	0020	BGM	Beginning of Message	M	1	
21	0040	DTM	Date/Time/Period	C	9	
	0110		Segment Group 2: TDT-DTM-SG3	C		9
22	0120	TDT	Transport Information	M	1	
24	0130	DTM	Date/Time/Period	C	9	
	0150		Segment Group 3: LOC	C		9
25	0160	LOC	Place/Location Identification	M	1	
	0180		Segment Group 4: NAD-SG5	M		9
26	0190	NAD	Name and Address	M	1	
	0200		Segment Group 5: CTA-COM	C		9
28	0210	CTA	Contact Information	M	1	
29	0220	COM	Communication Contact	C	9	
	0540		Segment Group 13: EQD-RFF-EQN-DTM-SG14-SEL-FTX-SG18	M		9999
30	0550	EQD	Equipment Details	M	1	
31	0560	RFF	Reference	C	9	
32	0570	EQN	Number of Units	C	1	
33	0590	DTM	Date/Time/Period	C	9	
	0640		Segment Group 14: TMP-RNG	C		9
34	0650	TMP	Temperature	M	1	
35	0660	RNG	Range Details	C	1	
36	0670	SEL	Seal Number	C	9	
37	0680	FTX	Free Text	C	9	
	0850		Segment Group 18: TDT-DTM-SG19	C		9
39	0860	TDT	Transport Information	M	1	
41	0870	DTM	Date/Time/Period	C	9	
	0880		Segment Group 19: LOC	C		9
42	0890	LOC	Place/Location Identification	M	1	
43	0970	CNT	Control Total	C	1	
44	0980	UNT	Message Trailer	M	1	







**Segment:** **UNH** Message Header  
**Position:** 0010  
**Group:**  
**Level:** 0  
**Usage:** Mandatory  
**Max Use:** 1  
**Purpose:** A service segment starting and uniquely identifying a message. The message type code for the Container announcement message is COPARN.  
 Note: Container announcement messages conforming to this document must contain the following data in segment UNH, composite S009:  
 Data element 0065 COPARN 0052 D 0054 03A 0051 UN

**Dependency Notes:**

**Semantic Notes:**

**Comments:**

**Notes:** *This segment marks the beginning of the message, and identifies the version of the standard used.*

*Example: UNH+1+COPARN:D:03A:UN'*

**Data Element Summary**

<u>User Attribute</u>	<u>Data Element</u>	<u>Component Element</u>	<u>Name</u>	<u>Attributes</u>
M	0062		MESSAGE REFERENCE NUMBER	M 1 an..14
			<i>Unique reference assigned by the sender.</i>	
M	S009		MESSAGE IDENTIFIER	M 1
M		0065	Message type identifier	M an..6
			<i>Must be transmitted</i>	
			COPARN Container announcement message	
M		0052	Message type version number	M an..3
			<i>Must be transmitted</i>	
			D Draft version/UN/EDIFACT Directory	
M		0054	Message type release number	M an..3
			<i>Must be transmitted</i>	
			03A Release 2003 - A	
M		0051	Controlling agency	M an..2
			<i>Must be transmitted</i>	
			UN UN/CEFACT	

**Segment:** **BGM** Beginning of Message  
**Position:** 0020  
**Group:**  
**Level:** 0  
**Usage:** Mandatory  
**Max Use:** 1  
**Purpose:** A segment to indicate the beginning of a message and to transmit identifying number and the further specification of the message type (in data element 1001: Document name code), such as Empty container disposition order, Release order, Pre- arrival notice, Acceptance order, Empty container notice, Call-down order, On-hire request, On-hire order, Off-hire request, Off-hire notice.

**Dependency Notes:**

**Semantic Notes:**

**Comments:**

**Notes:** *Example: BGM+108+123456+9'*

**Data Element Summary**

<u>User Attribute</u>	<u>Data Element</u>	<u>Component Element</u>	<u>Name</u>	<u>Attributes</u>
	C002		DOCUMENT/MESSAGE NAME	C 1
R		1001	Document name code	C an..3
		104	Transport equipment impending arrival advice	
		108	Transport equipment empty release instruction	
		1131	Code list identification code	C an..17
		3055	Code list responsible agency code	C an..3
		1000	Document name	C an..35
R	C106		DOCUMENT/MESSAGE IDENTIFICATION	C 1
R		1004	Document identifier	C an..35
			<i>Sender's unique reference number</i>	
		1056	Version identifier	C an..9
		1060	Revision identifier	C an..6
R	1225		MESSAGE FUNCTION CODE	C 1 an..3
			<i>If Code 1 or 5 is used, reference number of the message which is being cancelled/replaced must appear in the header level RFF using the code ACW in e1153.</i>	
		1	Cancellation	
		5	Replace	
		9	Original	
O	4343		RESPONSE TYPE CODE	C 1 an..3
			<i>may be transmitted if required by prior arrangement</i>	
		AB	Message acknowledgement	

**Segment:** **DTM** Date/Time/Period  
**Position:** 0040  
**Group:**  
**Level:** 1  
**Usage:** Conditional (Optional)  
**Max Use:** 9  
**Purpose:** A segment to indicate a date and time applying the message as a whole: - requested equipment positioning date and/or time - expected on-hire date and/or time - expected return period  
**Dependency Notes:**  
**Semantic Notes:**  
**Comments:**  
**Notes:** *Example: DTM+137:200917031230:203'*

**Data Element Summary**

<u>User</u>	<u>Data</u>	<u>Component</u>	<u>Name</u>	<u>Attributes</u>
<u>Attribute</u>	<u>Element</u>	<u>Element</u>		
M	C507		DATE/TIME/PERIOD	M 1
M		2005	Date or time or period function code qualifier 137 Document/message date/time	M an..3
R		2380	Date or time or period text <i>Date/time that the message was prepared</i>	C an..35
R		2379	Date or time or period format code 203 CCYYMMDDHHMM	C an..3

**Segment:** **TDT** Transport Information  
**Position:** 0120 (Trigger Segment)  
**Group:** Segment Group 2 (Transport Information) Conditional (Optional)  
**Level:** 1  
**Usage:** Mandatory  
**Max Use:** 1  
**Purpose:** A segment to indicate information related to the main carriage stage of the transport (sea), such as voyage number or indication sea transport, vessel and carrier or liner. Information on related inland transport stage(s) can also be included, such as mode of inland transport, means of transport, and inland carrier, such as: - main-carriage transport (sea) - pre- or on-carriage transport - second pre- or on-carriage transport

**Dependency Notes:**

**Semantic Notes:**

**Comments:**

**Notes:**

*Use this TDT Segment for vessel/voyage information pertaining to the entire export release. Use the Group 18 TDT where containers are to be released for different vessels and voyages.*

**Example:**

*TDT+20+908N+1++HLC:172:SMDG:Hapag-Lloyd+9232589:146:11:Glasgow Express'*

**Data Element Summary**

User Attribute	Data Element	Component Element	Name	Attributes
M	8051		TRANSPORT STAGE CODE QUALIFIER 20 Main-carriage transport	M 1 an..3
R	8028		MEANS OF TRANSPORT JOURNEY IDENTIFIER <i>Vessel Operator's Voyage Number</i>	C 1 an..17
R	C220		MODE OF TRANSPORT	C 1
R		8067	Transport mode name code 1 Maritime Transport ocean	C an..3
O	C001		TRANSPORT MEANS	O 1
O		8179	Transport means description code	O an..8
O		1131	Code list identification code	O an..17
O		3055	Code list responsible agency code	O an..3
O		8178	Transport means description	O an..17
R	C040		CARRIER	C 1
R		3127	Carrier identifier <i>Vessel Operator's Code in accordance with SMDG Master Liner Codes List</i>	C an..17
O		1131	Code list identification code 172 Carriers	C an..17
O		3055	Code list responsible agency code 11 Lloyd's register of shipping 166 US, National Motor Freight Classification Association 306 SMDG (Ship-planning Message Design Group)	C an..3
O		3128	Carrier name <i>Vessel operator's name (free text)</i>	C an..35
R	C222		TRANSPORT IDENTIFICATION	C 1
R		8213	Transport means identification name identifier <i>Lloyd's (IMO) Number</i>	C an..9
O		1131	Code list identification code	O an..17

---

		103	Call sign directory		
		146	Means of transport identification		
<b>O</b>	<b>3055</b>	<b>Code list responsible agency code</b>		<b>O</b>	<b>an..3</b>
		11	Lloyd's register of shipping		
<b>O</b>	<b>8212</b>	<b>Transport means identification name</b>		<b>O</b>	<b>an..35</b>
		<i>Vessel name (free text)</i>			

**Segment:** **DTM** Date/Time/Period  
**Position:** 0130  
**Group:** Segment Group 2 (Transport Information) Conditional (Optional)  
**Level:** 2  
**Usage:** Conditional (Optional)  
**Max Use:** 9  
**Purpose:** A segment to indicate the arrival date and time of an inland means of transport such as a place or port of discharge or loading.

**Dependency Notes:**

**Semantic Notes:**

**Comments:**

**Notes:** *Example: DTM+133::20090423:102'*

**Data Element Summary**

<u>User</u>	<u>Data</u>	<u>Component</u>	<u>Name</u>	<u>Attributes</u>
<u>Attribute</u>	<u>Element</u>	<u>Element</u>		
M	C507		DATE/TIME/PERIOD	M 1
M		2005	Date or time or period function code qualifier	M an..3
			132 Transport means arrival date/time, estimated	
			<i>ETA of nominated vessel</i>	
			133 Transport means departure date/time, estimated	
			<i>ETD of nominated vessel</i>	
X		2380	Date or time or period text	C an..35
R		2379	Date or time or period format code	C an..3
			102 CCYYMMDD	
			203 CCYYMMDDHHMM	



**Segment:** **LOC** Place/Location Identification  
**Position:** 0160 (Trigger Segment)  
**Group:** Segment Group 3 (Place/Location Identification) Conditional (Required)  
**Level:** 2  
**Usage:** Mandatory  
**Max Use:** 1  
**Purpose:** A segment to specify a location associated with a transport stage such as final port or place of discharge or loading.

**Dependency Notes:**

**Semantic Notes:**

**Comments:**

**Notes:** *Sample Segment: LOC+9+AUMEL'*

**Data Element Summary**

<u>User</u>	<u>Data</u>	<u>Component</u>	<u>Name</u>	<u>Attributes</u>
<u>Attribute</u>	<u>Element</u>	<u>Element</u>		
M	3227		LOCATION FUNCTION CODE QUALIFIER	M 1 an..3
			8 Place of destination	
			9 Place/port of loading	
			11 Place/port of discharge	
R	C517		LOCATION IDENTIFICATION	C 1
R		3225	Location name code	C an..25
			<i>UNLOCODE</i>	
O		1131	Code list identification code	C an..17
			139 Port	
O		3055	Code list responsible agency code	C an..3
			6 UN/ECE (United Nations - Economic Commission for Europe)	
O		3224	Location name	C an..256
O	C519		RELATED LOCATION ONE IDENTIFICATION	C 1
			<i>1st related location code</i>	
O		3223	First related location name code	C an..25
O		1131	Code list identification code	C an..17
			72 Container terminal	
O		3055	Code list responsible agency code	C an..3
O		3222	First related location name	C an..70
X	C553		RELATED LOCATION TWO IDENTIFICATION	C 1
X		3233	Second related location name code	C an..25
X		1131	Code list identification code	C an..17
X		3055	Code list responsible agency code	C an..3
X		3232	Second related location name	C an..70

**Segment:** **NAD** Name and Address  
**Position:** 0190 (Trigger Segment)  
**Group:** Segment Group 4 (Name and Address) Mandatory  
**Level:** 1  
**Usage:** Mandatory  
**Max Use:** 1  
**Purpose:** A segment to identify the party's name and address, and function, and other addresses, such as: - ordering customer - ordering customer agent - message recipient - message sender - place of positioning - place of collection - final place of positioning - carrier agent (sea) - charges payer - place of acceptance name and address - invoicee - stripping address - return address - on hire party direct interchange - off hire party direct interchange - container survey agency

**Dependency Notes:**

**Semantic Notes:**

**Comments:**

**Notes:**

*It is recommended that wherever possible companies use industry agreed or internationally recognised codes to identify parties. However, it is recognised that it is industry practice for companies to use their own codes. In these circumstances it is recommended that element C058 be used to identify, in free form text, the name of the party.*

*Sample Segment: NAD+MR+MCS1'  
NAD+MR++MCS Cooks River'*

**Data Element Summary**

User	Data	Component	Attributes	
Attribute	Element	Element	Name	
M	3035		<b>PARTY FUNCTION CODE QUALIFIER</b>	M 1 an..3
			CF Container operator/lessee	
			MR Message recipient	
			MS Document/message issuer/sender	
			TO Lessor	
	C082		<b>PARTY IDENTIFICATION DETAILS</b>	C 1
M		3039	<b>Party identifier</b>	M an..35
			<i>Company Code</i>	
O		1131	<b>Code list identification code</b>	C an..17
			160 Party identification	
			172 Carriers	
O		3055	<b>Code list responsible agency code</b>	C an..3
			235 AU, Tradegate	
			306 SMDG (Ship-planning Message Design Group)	
O	C058		<b>NAME AND ADDRESS</b>	C 1
O		3124	<b>Name and address description</b>	O an..35
O		3124	<b>Name and address description</b>	C an..35
O		3124	<b>Name and address description</b>	C an..35
O		3124	<b>Name and address description</b>	C an..35
O		3124	<b>Name and address description</b>	C an..35
X	C080		<b>PARTY NAME</b>	O 1
X		3036	<b>Party name</b>	M an..35
X		3036	<b>Party name</b>	C an..35
X		3036	<b>Party name</b>	C an..35

---

X		3036	Party name	C	an..35
X		3036	Party name	C	an..35
X		3045	Party name format code	C	an..3
X	C059		STREET	O	1
X		3042	Street and number or post office box identifier	M	an..35
X		3042	Street and number or post office box identifier	C	an..35
X		3042	Street and number or post office box identifier	C	an..35
X		3042	Street and number or post office box identifier	C	an..35
X	3164		CITY NAME	O	1 an..35
X	C819		COUNTRY SUB-ENTITY DETAILS	O	1
X		3229	Country sub-entity name code	C	an..9
X		1131	Code list identification code	C	an..17
X		3055	Code list responsible agency code	C	an..3
X		3228	Country sub-entity name	C	an..70
X	3251		POSTAL IDENTIFICATION CODE	O	1 an..17
X	3207		COUNTRY NAME CODE	O	1 an..3

**Segment:** **CTA** **Contact Information**  
**Position:** 0210 (Trigger Segment)  
**Group:** Segment Group 5 (Contact Information)      Conditional (Optional)  
**Level:** 2  
**Usage:** Mandatory  
**Max Use:** 1  
**Purpose:** A segment to identify a person or department of a message sender and/or message recipient, such as: - information contact  
**Dependency Notes:**  
**Semantic Notes:**  
**Comments:**  
**Notes:** *Example: CTA+IC+:Bill Smith'*

**Data Element Summary**

<u>User</u>	<u>Data</u>	<u>Component</u>	<u>Name</u>	<u>Attributes</u>
<u>Attribute</u>	<u>Element</u>	<u>Element</u>		
R	3139		CONTACT FUNCTION CODE	C 1 an..3
			IC                      Information contact	
R	C056		DEPARTMENT OR EMPLOYEE DETAILS	C 1
X		3413	Department or employee name code	C an..17
O		3412	Department or employee name	C an..35
			<i>Contact Name</i>	

**Segment:** **COM** Communication Contact  
**Position:** 0220  
**Group:** Segment Group 5 (Contact Information) Conditional (Optional)  
**Level:** 3  
**Usage:** Conditional (Required)  
**Max Use:** 9  
**Purpose:** A segment to identify a communication number of a person or department to whom communication should be directed.  
**Dependency Notes:**  
**Semantic Notes:**  
**Comments:**  
**Notes:** *COM+0299999999:TE'*

**Data Element Summary**

<u>User</u>	<u>Data</u>	<u>Component</u>	<u>Name</u>	<u>Attributes</u>
<u>Attribute</u>	<u>Element</u>	<u>Element</u>		
M	C076		COMMUNICATION CONTACT	M 3
M		3148	Communication address identifier	M an..512
			<i>Contact Telephone Number</i>	
M		3155	Communication address code qualifier	M an..3
			TE Telephone	

**Segment:** **EQD** Equipment Details  
**Position:** 0550 (Trigger Segment)  
**Group:** Segment Group 13 (Equipment Details) Mandatory  
**Level:** 1  
**Usage:** Mandatory  
**Max Use:** 1  
**Purpose:** A segment to specify a container, container size and type, and full/empty indication; also to specify the type of rail car on which a related container is transported.

**Dependency Notes:**

**Semantic Notes:**

**Comments:**

**Notes:** *Example: EQD+CN++2010:102:5+2+2+4'*

**Data Element Summary**

User	Data	Component			Attributes
<u>Attribute</u>	<u>Element</u>	<u>Element</u>	<u>Name</u>		
M	8053		EQUIPMENT TYPE CODE QUALIFIER		M 1 an..3
			CN Container		
O	C237		EQUIPMENT IDENTIFICATION		O 1
O		8260	Equipment identifier		C an..17
O		1131	Code list identification code		C an..17
O		3055	Code list responsible agency code		C an..3
O		3207	Country name code		C an..3
R	C224		EQUIPMENT SIZE AND TYPE		C 1
R		8155	Equipment size and type description code		C an..10
			<i>Equipment size/type code as per ISO6346</i>		
O		1131	Code list identification code		C an..17
			102 Size and type		
O		3055	Code list responsible agency code		C an..3
			5 ISO (International Organization for Standardization)		
O		8154	Equipment size and type description		C an..35
			<i>Equipment size/type (free text)</i>		
R	8077		EQUIPMENT SUPPLIER CODE		C 1 an..3
			1 Shipper supplied		
			2 Carrier supplied		
			5 Third party supplied		
R	8249		EQUIPMENT STATUS CODE		C 1 an..3
			2 Export		
			3 Import		
R	8169		FULL OR EMPTY INDICATOR CODE		C 1 an..3
			4 Empty		
			5 Full		

**Segment:** **RFF** Reference  
**Position:** 0560  
**Group:** Segment Group 13 (Equipment Details) Mandatory  
**Level:** 2  
**Usage:** Conditional (Optional)  
**Max Use:** 9  
**Purpose:** A segment to express a reference which applies to the particular container, such as: - container sequence number - lower equipment serial number of range - upper equipment serial number of range - referring sequence number - reference at place of positioning - reference at place of collection - related container announcement reference (reference to Empty container disposition order) - transport costs reference number - carrier agent's reference number - freight forwarder's reference

**Dependency Notes:**

**Semantic Notes:**

**Comments:**

**Notes:** *Example: RFF+BN:ABC123456'*

**Data Element Summary**

<u>User Attribute</u>	<u>Data Element</u>	<u>Component Element</u>	<u>Name</u>	<u>Attributes</u>
M	C506		REFERENCE	M 1
M		1153	Reference code qualifier	M an..3
			ACD Additional reference number	
			<i>Use ACD for Leasing Company Reference Number</i>	
			BN Booking reference number	
			LI Line item reference number	
			RE Release number	
R		1154	Reference identifier	C an..70
			<i>Reference number</i>	

**Segment:** **EQN** Number of Units  
**Position:** 0570  
**Group:** Segment Group 13 (Equipment Details) Mandatory  
**Level:** 2  
**Usage:** Conditional (Optional)  
**Max Use:** 1  
**Purpose:** A segment to specify the number of containers of the same size and type in case of equipment guidelines.  
**Dependency Notes:**  
**Semantic Notes:**  
**Comments:**  
**Notes:** *Example: EQN+1'*

#### Data Element Summary

<u>User</u>	<u>Data</u>	<u>Component</u>	<u>Attributes</u>
<u>Attribute</u>	<u>Element</u>	<u>Element</u> <u>Name</u>	
M	C523	NUMBER OF UNIT DETAILS	M 1
R		6350 Units quantity	C n..15
		<i>No of units</i>	



**Segment:** **DTM** Date/Time/Period  
**Position:** 0590  
**Group:** Segment Group 13 (Equipment Details) Mandatory  
**Level:** 2  
**Usage:** Conditional (Optional)  
**Max Use:** 9  
**Purpose:** A segment to indicate a date and time relating to the container, such as: - estimated positioning date/time - ultimate release date/time - expected on-hire date and/or time

**Dependency Notes:**

**Semantic Notes:**

**Comments:**

**Notes:** DTM+234:20090423:102'

**Data Element Summary**

<u>User</u>	<u>Data</u>	<u>Component</u>	<u>Name</u>	<u>Attributes</u>
<u>Attribute</u>	<u>Element</u>	<u>Element</u>		
M	C507		DATE/TIME/PERIOD	M 1
M		2005	Date or time or period function code qualifier	M an..3
			7 Effective from date/time	
			<i>Effective date of when a container can be released</i>	
			36 Expiry date	
			<i>Expiry date of the release</i>	
			201 Pick-up date/time of equipment	
			<i>The pick up date of the container</i>	
			234 Collection date/time, earliest	
			<i>Not to be released before this date</i>	
			395 Equipment positioning date/time, estimated	
			<i>Estimated pick up/return date/time</i>	
R		2380	Date or time or period text	C an..35
			<i>Date or date/time</i>	
R		2379	Date or time or period format code	C an..3
			102 CCYYMMDD	
			203 CCYYMMDDHHMM	

**Segment:** **TMP** Temperature  
**Position:** 0650 (Trigger Segment)  
**Group:** Segment Group 14 (Temperature)      Conditional (Optional)  
**Level:** 2  
**Usage:** Mandatory  
**Max Use:** 1  
**Purpose:** A segment to specify the transport temperature setting of a container.  
**Dependency Notes:**  
**Semantic Notes:**  
**Comments:**  
**Notes:** *Example: TMP+2+011:CEL'*

**Data Element Summary**

<u>User</u>	<u>Data</u>	<u>Component</u>	<u>Attributes</u>
<u>Attribute</u>	<u>Element</u>	<u>Element</u> <u>Name</u>	
M	6245	TEMPERATURE TYPE CODE QUALIFIER 2                      Transport temperature	M    1    an..3
R	C239	TEMPERATURE SETTING	C    1
R	6246	Temperature degree <i>Temperature Setting</i>	C    n..15
R	6411	Measurement unit code <i>CEL    Celsius</i>	C    an..8

**Segment:** **RNG** Range Details  
**Position:** 0660  
**Group:** Segment Group 14 (Temperature)      Conditional (Optional)  
**Level:** 3  
**Usage:** Conditional (Optional)  
**Max Use:** 1  
**Purpose:** A segment to specify the transport temperature range or the pre-tripping range of a container.  
**Dependency Notes:**  
**Semantic Notes:**  
**Comments:**  
**Notes:** *Example: RNG+5+CEL:009:013'*

**Data Element Summary**

<u>User</u>	<u>Data</u>	<u>Component</u>	<u>Name</u>	<u>Attributes</u>
<u>Attribute</u>	<u>Element</u>	<u>Element</u>		
M	6167		RANGE TYPE CODE QUALIFIER 5                      Temperature range	M      1    an..3
R	C280		RANGE	C      1
M		6411	Measurement unit code <i>CEL Celsius</i>	M      an..8
R		6162	Range minimum quantity <i>Minimum temperature</i>	C      n..18
R		6152	Range maximum quantity <i>Maximum temperature</i>	C      n..18

**Segment:** **SEL** Seal Number  
**Position:** 0670  
**Group:** Segment Group 13 (Equipment Details) Mandatory  
**Level:** 2  
**Usage:** Conditional (Optional)  
**Max Use:** 9  
**Purpose:** A segment to identify seal and seal issuer associated with the container, such as shipper, consolidator, carrier (sea) and Customs.

**Dependency Notes:**

**Semantic Notes:**

**Comments:**

**Notes:** *Example: SEL++CA'*

**Data Element Summary**

<u>User</u>	<u>Data</u>	<u>Component</u>	<u>Name</u>	<u>Attributes</u>
<u>Attribute</u>	<u>Element</u>	<u>Element</u>		
O	9308		TRANSPORT UNIT SEAL IDENTIFIER	C 1 an..35
			<i>Seal Number</i>	
M	C215		SEAL ISSUER	C 1
		9303	Sealing party name code	C an..3
			<i>CA to be used where shipping line requires shipping line seal to be used</i>	
			<i>AB to be used where shipping line does not specify its own seal is to be used</i>	
			AB Unknown	
			CA Carrier	
X	4517		SEAL CONDITION CODE	C 1 an..3
X	C208		IDENTITY NUMBER RANGE	C 1
X		7402	Object identifier	M an..35
		7402	Object identifier	C an..35

**Segment:** **FTX** Free Text  
**Position:** 0680  
**Group:** Segment Group 13 (Equipment Details)      Mandatory  
**Level:** 2  
**Usage:** Conditional (Optional)  
**Max Use:** 9  
**Purpose:** A segment to specify processable supplementary information associated with the container, such as: - loading instructions (seagoing vessel) - special instructions (related to inland transport) - container order information (conditions to be checked) - remarks

**Dependency Notes:**

**Semantic Notes:**

**Comments:**

**Notes:**

*Example: FTX+AAA+++Furniture'*  
*FTX+CWR+21500'*  
*FTX+OSI+CLS'*  
*FTX+SIN+A'*  
*FTX+QUC+ABC*

**Data Element Summary**

<u>User</u>	<u>Data</u>	<u>Component</u>	<u>Name</u>	<u>Attributes</u>
<u>Attribute</u>	<u>Element</u>	<u>Element</u>		
M	4451		TEXT SUBJECT CODE QUALIFIER	M 1 an..3
			AAA Goods description	
			CWR Container Weight Rating	
			HAZ Hazard information	
			MRD Multiple Return Depots	
			ORI Order instruction	
			OSI Other service information	
			QQD Quality demands/requirements	
			SIN Special instructions	
M	C107	4441	TEXT REFERENCE Free text description code	C 1 M an..17
			<i>Reefer settings (if e4451 = OSI)</i>	
			<i>CLS Vents closed</i>	
			<i>FLL Vents open</i>	
			<i>Special Instruction (if e4451 = SIN)</i>	
			<i>Use for Container status codes</i>	
			<i>Quality Code if (e4451 = QQD)</i>	
			<i>Free Text</i>	
			<i>Permissible Codes are:</i>	
			<i>FQ = Food Quality</i>	
			<i>GC = General Purpose (or General Cargo)</i>	
			<i>MC = Multi Purpose</i>	
			<i>FT = Flexitank Quality</i>	
			<i>Container weight rating if (e4451 = CWR)</i>	
			<i>Free text</i>	
			<i>A maximum of 5 numeric characters is required; no punctuation, no unit qualifier.</i>	
			<i>Multiple Return Depots if (e4451 = MRD)</i>	
			<i>Free Text</i>	

<i>Hazardous Goods Indicator if (e4451 = HAZ)</i>				
O		1131	Code list identification code	C an..17
O		3055	Code list responsible agency code	C an..3
M	C108		TEXT LITERAL	C 1
M		4440	Free text	M an..512
X		4440	Free text	C an..512
X		4440	Free text	C an..512
X		4440	Free text	C an..512
X		4440	Free text	C an..512

**Segment:** **TDT** Transport Information  
**Position:** 0860 (Trigger Segment)  
**Group:** Segment Group 18 (Transport Information) Conditional (Optional)  
**Level:** 2  
**Usage:** Mandatory  
**Max Use:** 1  
**Purpose:** A segment to specify pre- or on-carriage transport details, such as: \* pre- or on-carriage transport \* second pre- or on-carriage transport

**Dependency Notes:**

**Semantic Notes:**

**Comments:**

**Notes:**

*Use this TDT Segment for vessel/voyage information where containers are to be released for different vessels and voyages.*

*Use the Group 2 TDT Segment pertaining to the entire export release.*

*Example:*

*TDT+20+908N+1++HLC:172:SMDG:Hapag-Lloyd+9232589:146:11:Glasgow Express'*

**Data Element Summary**

<u>User Attribute</u>	<u>Data Element</u>	<u>Component Element</u>	<u>Name</u>	<u>Attributes</u>
M	8051		TRANSPORT STAGE CODE QUALIFIER 20 Main-carriage transport	M 1 an..3
R	8028		MEANS OF TRANSPORT JOURNEY IDENTIFIER <i>Vessel Operator's Voyage Number</i>	C 1 an..17
R	C220		MODE OF TRANSPORT	C 1
R		8067	Transport mode name code 1 Maritime Transport ocean	C an..3
X		8066	Transport mode name	C an..17
O	C001		TRANSPORT MEANS	C 1
O		8179	Transport means description code	C an..8
O		1131	Code list identification code	C an..17
O		3055	Code list responsible agency code	C an..3
O		8178	Transport means description	C an..17
O	C040		CARRIER	C 1
O		3127	Carrier identifier <i>Vessel Operator's code in accordance with SMDG Master Liner Codes List</i>	C an..17
O		1131	Code list identification code 172 Carriers	C an..17
O		3055	Code list responsible agency code 11 Lloyd's register of shipping 166 US, National Motor Freight Classification Association 306 SMDG (Ship-planning Message Design Group)	C an..3
O		3128	Carrier name <i>Vessel operator's name (free text)</i>	C an..35
O	C222		TRANSPORT IDENTIFICATION	C 1
O		8213	Transport means identification name identifier <i>Lloyd's (IMO) Number</i>	C an..9
O		1131	Code list identification code 103 Call sign directory	C an..17

---

		146	Means of transport identification		
<b>O</b>	<b>3055</b>	<b>Code list responsible agency code</b>		<b>C</b>	<b>an..3</b>
		11	Lloyd's register of shipping		
<b>O</b>	<b>8212</b>	<b>Transport means identification name</b>		<b>C</b>	<b>an..35</b>
		<i>Vessel name (free text)</i>			



**Segment:** **DTM** Date/Time/Period  
**Position:** 0870  
**Group:** Segment Group 18 (Transport Information) Conditional (Optional)  
**Level:** 3  
**Usage:** Conditional (Optional)  
**Max Use:** 9  
**Purpose:** A segment to specify a date and time related to the pre- or on-carriage transport such as arrival or departure date and time.

**Dependency Notes:**

**Semantic Notes:**

**Comments:**

**Notes:**

*Either Function Code 132 or 133 must be used in C507.*

*Example: DTM+133:20090423:102'*

**Data Element Summary**

<u>User</u>	<u>Data</u>	<u>Component</u>	<u>Name</u>	<u>Attributes</u>
<u>Attribute</u>	<u>Element</u>	<u>Element</u>		
M	C507		DATE/TIME/PERIOD	M 1
M		2005	Date or time or period function code qualifier	M an..3
			132 Transport means arrival date/time, estimated	
			<i>ETA of nominated vessel</i>	
			133 Transport means departure date/time, estimated	
			<i>ETD of nominated vessel</i>	
R		2380	Date or time or period text	C an..35
R		2379	Date or time or period format code	C an..3
			102 CCYYMMDD	
			203 CCYYMMDDHHMM	

**Segment:** **LOC** Place/Location Identification  
**Position:** 0890 (Trigger Segment)  
**Group:** Segment Group 19 (Place/Location Identification) Conditional (Optional)  
**Level:** 3  
**Usage:** Mandatory  
**Max Use:** 1  
**Purpose:** A segment to specify ports/locations associated with the pre- or on-carriage transport, such as: place of departure - place of arrival

**Dependency Notes:**

**Semantic Notes:**

**Comments:**

**Notes:** *Example: LOC+9+AUMEL'*

**Data Element Summary**

<u>User</u>	<u>Data</u>	<u>Component</u>	<u>Name</u>	<u>Attributes</u>
<u>Attribute</u>	<u>Element</u>	<u>Element</u>		
M	3227		LOCATION FUNCTION CODE QUALIFIER	M 1 an..3
			8 Place of destination	
			9 Place/port of loading	
			11 Place/port of discharge	
R	C517		LOCATION IDENTIFICATION	C 1
R		3225	Location name code	C an..35
			<i>UNLOCODE</i>	
O		1131	Code list identification code	C an..17
			139 Port	
O		3055	Code list responsible agency code	C an..3
			6 UN/ECE (United Nations - Economic Commission for Europe)	
O		3224	Location name	C an..256
X	C519		RELATED LOCATION ONE IDENTIFICATION	C 1
X		3223	First related location name code	C an..25
X		1131	Code list identification code	C an..17
X		3055	Code list responsible agency code	C an..3
X		3222	First related location name	C an..70
X	C553		RELATED LOCATION TWO IDENTIFICATION	C 1
X		3233	Second related location name code	C an..25
X		1131	Code list identification code	C an..17
X		3055	Code list responsible agency code	C an..3
X		3232	Second related location name	C an..70
X	5479		RELATION CODE	C 1 an..3

**Segment:** **CNT** Control Total  
**Position:** 0970  
**Group:**  
**Level:** 0  
**Usage:** Conditional (Advised)  
**Max Use:** 1  
**Purpose:** A segment to specify the number of containers in the message, explicitly given by the sender.  
**Dependency Notes:**  
**Semantic Notes:**  
**Comments:**  
**Notes:** *Example: CNT+16:1'*

#### Data Element Summary

<u>User</u>	<u>Data</u>	<u>Component</u>	<u>Name</u>	<u>Attributes</u>
<u>Attribute</u>	<u>Element</u>	<u>Element</u>		
M	C270		CONTROL	M 1
M		6069	Control total type code qualifier	M an..3
			16 Total number of equipment	
M		6066	Control total quantity	M n..18
<i>Number of EQD segments in the message (if e6069 = 16)</i>				

**Segment:** **UNT** Message Trailer  
**Position:** 0980  
**Group:**  
**Level:** 0  
**Usage:** Mandatory  
**Max Use:** 1  
**Purpose:** A service segment ending a message, giving the total number of segments in the message (including the UNH & UNT) and the control reference number of the message.

**Dependency Notes:**

**Semantic Notes:**

**Comments:**

**Notes:** *Example: UNT+14+1'*

**Data Element Summary**

<u>User</u>	<u>Data</u>	<u>Component</u>	<u>Attributes</u>
<u>Attribute</u>	<u>Element</u>	<u>Element</u> <u>Name</u>	
M	0074	NUMBER OF SEGMENTS IN A MESSAGE	M 1 n..6
		<i>Total number of segments in the message</i>	
M	0062	MESSAGE REFERENCE NUMBER	M 1 an..14
		<i>Message reference identical to e0062 in UNH segment</i>	